

4,000 - 8,000m <sup>3</sup> LNG carrier (propeller)	
Length	107.78m
Breadth	28.00m
Depth	4.50m
Design draft	2.00m
LNG cargo tank capacity	4,000 - 8,000m <sup>3</sup> at 95%

4,000 - 8,000m <sup>3</sup> LNG carrier (thruster IMO DPS 2)	
Length	102.90m
Breadth	24.60m
Depth	6.00m
Design draft	2.00m
Air draft	21.13m
LNG cargo tank capacity	4,000 - 8,000m <sup>3</sup> at 95%



## Ultra-Shallow Draft LNG Carrier

### Features:

Designed with the forward and aft lines configured into a V-form to reduce the waterline entrance angle and vessel resistance in waves

Can be ballasted in open water to improve both stability and speed

Deck stiffness and strengthening to suit final operational envelope and desired class notation

### Yard:

Batangas Heavy Fabrication, Yard 1 San Roque, Bauan, Batangas 4201

AG&P's full Azimuth Electric Drive IMO DP2 vessel is a workhorse designed specifically to meet the LNG delivery challenges presented by shallow rivers and restricted harbors. With a two-meter draft, the vessel is designed for both seagoing and riverine environments and is able to transfer LNG cargos near shore and offshore. Flexible and economical, the vessel has a speed of eight knots and does not need handling tugs. Its full Dynamic Positioning DP2 designation means versatile operation in any harbor.

### VESSEL PROPULSION AND CONTROLS

- Vessel propulsion is provided by 2 x DF 9L20DF engines rated 1665kW
- Standby generator set of 1 x DF 6L20EF 1065kW
- Moored vessel can provide 3500kW shore power through shore interface
- Retractable azimuth thrusters

### CARGO CONTAINMENT SYSTEM

- Cargo containment system is GTT MKIII membrane
- BOG 0.45V% / d: 347kg/hr
- Single tank with chamfered corners can withstand sloshing loads up to Beaufort Sea State 4/5 without reinforced foam
- Can discharge LNG into Type C tanks
- Capable of partial loading

### CARGO HANDLING SYSTEM

- BOG handling has an optimized configuration
- Two liquid lines and single vapor return
- LNG cargo pumps rated at 600m/hr
- CCS cooled down using spray pump
- CAM system fitted

### ORDERING AND DELIVERY

- The ultra-shallow draft LNGC has a delivery time of approximately 14-16 months from order placement based on existing design specifications
- The standardized design features save money in engineering, procurement and build
- Capex is significantly optimized
- To discuss your specific requirements, please contact [bd@agp.ph](mailto:bd@agp.ph)



Forward bridge control



Rear facing bridge control

## Company Overview

Founded in 1900, AG&P is a global industrial infrastructure company, delivering pragmatic gas logistics solutions and construction services to blue-chip clients for some of the world's most demanding infrastructure projects.

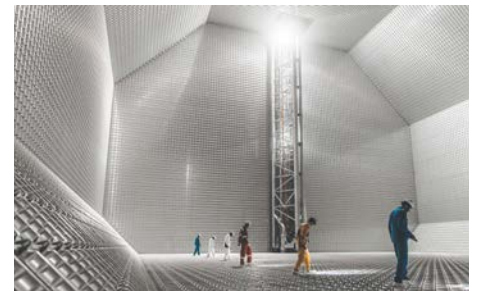
**Gas Logistics:** AG&P makes natural gas available to end-consumers in emerging markets through its integrated gas logistics platforms, anchored on its City Gas Distribution (CGD) networks that make natural gas conveniently accessible on demand. From aggregating multiple customer streams to supply acquisition from global LNG suppliers and infrastructure development (pipelines, trucks, vessels and dispensing stations), AG&P delivers natural gas directly to houses, gas stations, industrial and commercial establishments, providing easy access to cost-effective energy.

**Construction:** AG&P delivers award-winning construction solutions to industrial projects around the world. A global leader in onshore and offshore infrastructure, AG&P has an outstanding track record in executing complex projects for blue-chip clients including LNG liquefaction, E-houses and complex process modules for LNG plants, refineries, petrochemical facilities, mining operations and utilities plants. AG&P's FieldCOM Division (Field Construction, Commissioning, Operations and Maintenance) deploys highly trained, experienced professionals and craftsmen to project sites, bringing international standards to even the harshest and most remote locations.

AG&P brings global best practices in safety and quality to every project, regardless of location. The company holds a world-leading construction safety record for continuous safe man-hours and its outstanding performance for blue-chip clients demonstrates its execution capabilities. Throughout its history, AG&P has focused on delivering solutions that increase efficiencies, lower costs and accelerate schedule, enabling projects to become operational sooner.



Retractable bow thruster



GTT's unique MKIII membrane



BOG design

For more information, visit [www.agp.ph](http://www.agp.ph)

Published November 2018